



Leicestershire  
**Police**  
Protecting our communities



# Rural Policing Team Newsletter

## May 2024

Welcome to the second edition of 2024 for the rural communities of Leicestershire and Rutland. We aim to keep you updated as frequently as we can about rural crime in our area, what we've been up to and what the current crime trends look like.

### The Team

No new changes to the team to report on. The team continues to work together, to combat the issues within the rural communities of Leicestershire & Rutland. Each rurally located police station has an individual officer assigned. PC 4037 Matt Houghton and PC 2066 Chris Vickers covering Melton & Rutland, PC 553 Kelly Tones covering Market Harborough & Wigston, PC 1427 Lauren De Wet covering Charnwood, PC 3004 Mike Statt covering Hinckley & Bosworth & PC 237 Emma Holmes covering the North West.



The team continues to be led by PS 207 Rob Cross. Rob, previously a PC on the team stepped up into the role in January and successfully passed his Sergeants exam in March, well done Rob! This means that Rob will continue in his role and supervision of the team. INSP 2194 Shaun Wilson at the head of the team, covering all aspects as the inspector.



### Rural Crime:

Year to date, we are still seeing a decrease in rural and wildlife crime. The decrease in crime cannot be put down to one aspect alone, however it is a figure that we are proud of and want people to be aware of. Of course, this doesn't mean that we stay stagnant and we will of course look to drive down them numbers with further work, operations and cross border information/intelligence sharing.

**24%**



Crime happening 'now'? Call 999.



Crime happened? Call 101 / [www.leicspolice/reportcrime](http://www.leicspolice/reportcrime).



Use 'What3Words' to accurately pinpoint locations.





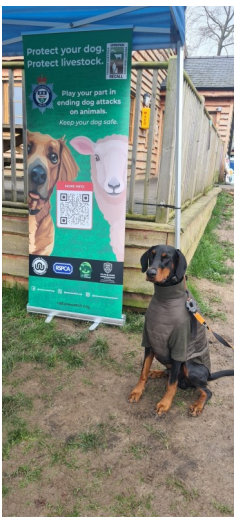
Leicestershire  
**Police**  
Protecting our communities



## Policing Operations

Our team has been committed to working on the issues that most affect the rural community. These issues vary and sometimes are dependant on the time of the year. Over the past few months we have been working hard to re-enforce messages around **livestock worrying, fly tipping, road safety, amongst other daily work.**

As we have in the past, we ran an operation with Melton Borough Council targeting those carrying waste and scrap without the relevant licenses. The operation saw 8 vehicles being stopped and checked, one of those was issued with an on the spot **Fixed Penalty Notice.**



### Op Recall

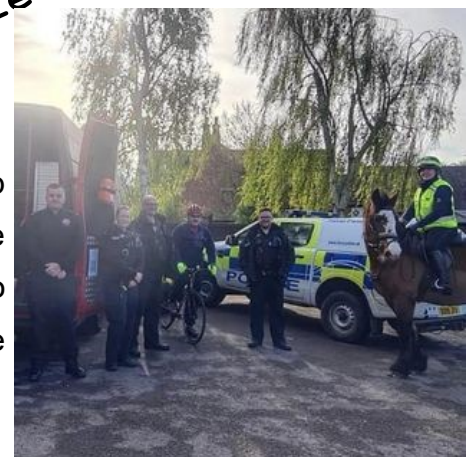
Operation Recall is a national operation, fronted by Rural Policing Teams across the country. The premise of the operation is simple: **Protect your dog. Protect Livestock.** Far too often we are contacted by farmers, telling us that their livestock have been worried or attacked by dogs out of control in rural areas. The operation, lead by Lauren, has been extremely impactful and has allowed us to share the message far and wide, with pop up stalls being held by the team across Leicestershire & Rutland. We hope that the message has

been well received and we start to see a decrease in these sort of incidents.

Operation Snaffle has returned!

The team came together with members of LFRS, mounted volunteers and the Road Safety Team, to undertake the first Op Snaffle of the year. This time in the village of Long Whatton. The operation identifies drivers, driving too close or passing too fast to horses on the road. The identified drivers are then given the chance to watch an impactful VR video with LFRS, education is key!

### Op Snaffle



Crime happening 'now'? Call 999.



Crime happened? Call 101 / [www.leicspolice/reportcrime](http://www.leicspolice/reportcrime).



Use 'What3Words' to accurately pinpoint locations.





Leicestershire  
**Police**

Protecting our communities



## Rural Recoveries

# £1.3 MILLION

The team has now amassed over £1.3m worth of recoveries since it was formed. Returning stolen items to their owners is something that we always endeavour to achieve, although not always possible, we like to share the good news stories.

The recovery of items is always easier when owners have taken due diligence to ensure their items are either; **trackable**, **identifiable** or even better a combination of them **both**.

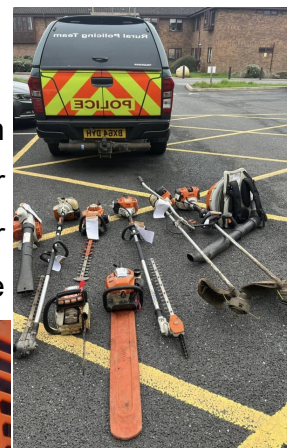


Trackers—There are a vast amount of trackers available, research and cost should be considered before deciding which one to use, that best suits you and the piece of equipment you are trying to protect. Making your property **trackable**, gives us a better chance of returning it to you.

Property Marking—This can be done in a number of ways, and again it is down to the owner to understand what will work best for them. Heavy duty marker pens, soldering irons, etching are all examples that work well. Whether it is your post code, asset numbers, company name. Make your property stand out, make



your property **identifiable**.



Crime happening 'now'? Call 999.



Crime happened? Call 101 / [www.leicspolice/reportcrime](http://www.leicspolice/reportcrime).



Use 'What3Words' to accurately pinpoint locations.





**Leicestershire  
Police**  
Protecting our communities



**Other News . . .** Community engagement is still a high priority for the team. Attending high footfall areas and events, allows us to capture a lot of people in small areas to deliver our various messages and catch up with some lovely people.



If you have any upcoming event which you think would benefit from the team being there, then please get in touch.

#### Where have we been?

- Open day at Russels (Harby)
- High Sheriffs ceremony
- Gorse Hill Farm, Leicester
- Quarterly Hub Meeting
- Drop in visits in the community
- NGO training day

#### Positive Outcomes

- Person found to have been in control of dog worried livestock in Rutland, issued with a conditional caution to pay £444 to farmer in costs and voluntary control order placed on dog
- Person found to have been in control of dog worried livestock in Charnwood, issued with a community resolution to pay costs and voluntary control order placed on dog
- Person found to be in control of dog/s which have worried livestock in Charnwood, issued with a community resolution and watched Op Recall educational video
- Person pleads guilty at court to 3 offences around welfare and register of birds, issued with 12 month community order, 200 hours unpaid work and £199 in fees.

#### Team Training & Development



- Matt & Chris undertook a 2 day course with Datatag in January, that course has then allowed them to make a positive ID on this JCB, stolen 3 years prior in from the West Mids area.
- The team has also undertaken a heritage crime training session and input. Heritage crime is also looked and investigated by the team.
- Training with the National Gamekeepers Organisation.



Crime happening 'now'? Call 999.



Crime happened? Call 101 / [www.leicspolice/reportcrime](http://www.leicspolice/reportcrime).



Use 'What3Words' to accurately pinpoint locations.





Leicestershire  
**Police**  
Protecting our communities



## Follow us

Our Facebook page, below, has more up to date information, news and positive outcomes from the team. It shows the work that we conduct week in, week out. Please give us a follow and see the world through our eyes.



Leicestershire & Rutland Rural  
Policing Team

If you cant wait for our posts, but you wish to hear about things closer to the time they are happening, then maybe joining one of the rural community run WhatsApp groups is for you. The groups across Leicestershire and Rutland are for sharing information about crime, loose animals and suspicious activity. Please email us using the address below if you are interested.



## WhatsApp

We are now more accessible to the rural community than we have ever been. There is a rural officer based at each main rural station—Melton/ Rutland, Loughborough, Hinckley and Blaby, Coalville and Market Harborough. We're always keen to help wherever we can, but we need you to report, report, report. If you see something, say something, either by using 999/101, or our online reporting via the QR codes below.



Report a rural crime.



Report a wildlife crime.

You can email the Rural Policing Team on the address below with any enquiries/questions (please do not report a crime to us on email) — [Leicsruralcrime@leics.police.uk](mailto:Leicsruralcrime@leics.police.uk).



Crime happening 'now'? Call 999.



Crime happened? Call 101 / [www.leicspolice/reportcrime](http://www.leicspolice/reportcrime).



Use 'What3Words' to accurately pinpoint locations.

